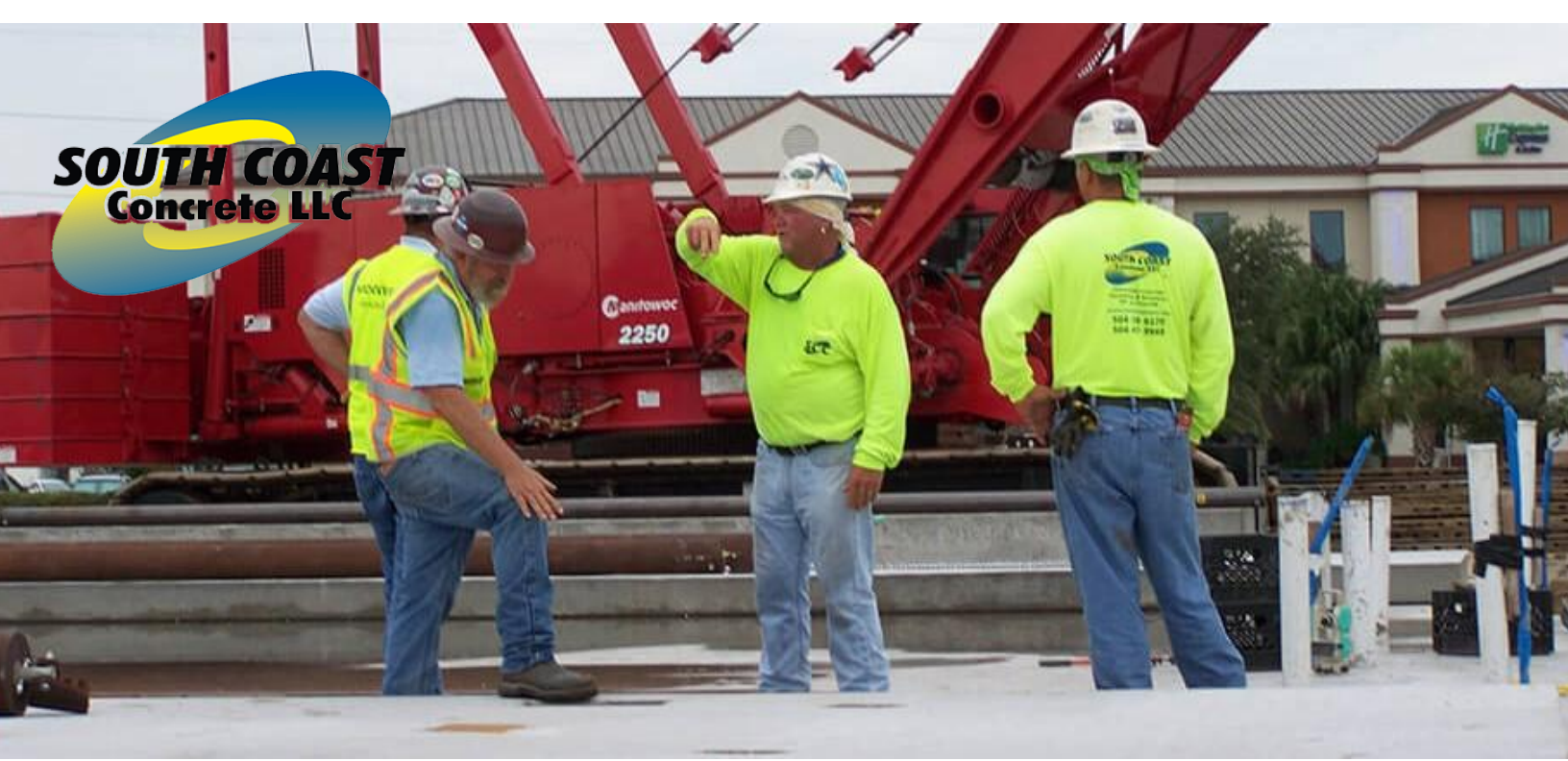




SOUTH COAST
Concrete LLC



Bio

South Coast Concrete, LLC – SCC has been in business for over 5 years and is owned by Bradley Harger and Randy Gaspard. The company's area of expertise is structural concrete which includes but is not limited to foundations, CIP Walls, Slab-On-Grade, Composite Metal Decks, CIP Columns, and Tilt-Wall. SCC performs approximately 95% of the scope of work in-house, and the field consists of 50 employees. Along with Brad and Randy, SCC has an office staff with years of experience in PM/Estimating and dealing with Certified Payroll and Davis Bacon Wages. Brad and Randy have also focused on building a quality staff of transplanted and local talent, all specialized in the trade; a professional crew is an integral part of their goal to make South Coast Concrete the premier concrete contractor in South Louisiana.

Brad Harger

Brad Harger started working in the commercial concrete business in the late 80s as a laborer and worked his way up to General Superintendent of Sunshine Structures. For over 20 years, he has been actively involved in tilt-up building jobs ranging from simple warehouses to the 400,000 sq ft multistory Marine Corps complex in Algiers, LA. Brad also has extensive experience in Design Build assist and Consulting. In 2008, he came to New Orleans and quickly realized the need for an experienced tilt contractor in the metro area; he moved his family to NOLA, and in 2011, he opened South Coast Concrete LLC with Randy Gaspard. Brad is a certified ACI Tilt-Up Supervisor.

Randy Gaspar

Randy Gaspard is the fourth generation of his family to pursue a career in the construction industry. He attended Loyola University before opening his own construction company. He brings over 15 years of solid experience in residential and commercial contracting and business management to South Coast Concrete. He is a native of Louisiana and resides in Luling with his family. Randy is a certified ACI Tilt-Up Technician.

Safety information

- No accidents
- No OSHA violations
- Daily employee safety meetings on every job
- Monthly safety meetings with foremen
- 10/30HR OSHA Training for Employees
- Trench/Excavation Engineered Manual
- Forklift/Excavator Licensing for Employees



**Yulman Stadium, Tulane University
- New Orleans, LA**

Project Size:
20,000 Seat Football Stadium

Construction Type:
Pile Supported Deep Foundations



**Movie Tavern at Juban's Crossing -
Denham Springs, LA**

Project Size:
36,000 SF - Multi Level

- Panel Heights: 24' to 38'-2"
- Total SF of Panels: 74,508

Construction Type:
Tilt Wall with Architectural Reveal and
Form Liner



**Federal City Marine Reserve
Center (MRC) - Algiers, LA**

Project Size:
411,000 SF - Four Story

- Panel Heights: 72'-6" with
a Thickness of 10.5'
- Total SF of Panels:
121,618SF

Construction Type:
Tilt Wall with Thin Brick

Church of the King - Mandeville, LA

Project Size:
45,000SF - Single Story

- Panel Height: 35'-2"
- Total SF of Panels: 74,508

Construction Type:
Tilt Wall with Architectural Reveal

**South Baton Rouge Charter School
- Baton Rouge, LA**

Project Size:
66,408SF - 2 Story

- Panel Height: 33'-2" with
Thickness of 10.5"
- Total SF of Panels:
37,814SF

Construction Type:
Tilt Wall with Formliner

**Pine Jog Elementary School
- West Palm, FL**

Project Size:
140,000SF - 3 Buildings - 2
Story

Construction Type:
Tilt Wall with Architectural
Reveal Pine Jog Elementary
School is the first LEED Gold
Elementary School in Florida